

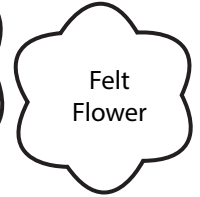
Tessie Fay

Head
(Cut 1 felt and 1 skin fabric)

Trace eyes and
mouth onto
head then
stitch or
draw



Felt
Flower



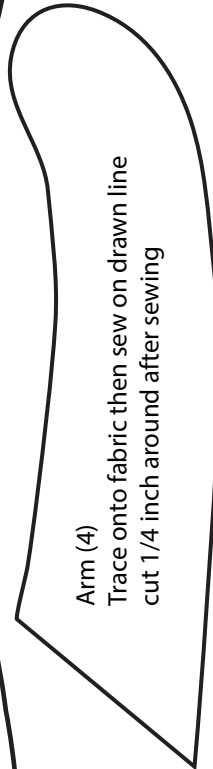
Felt
Flower



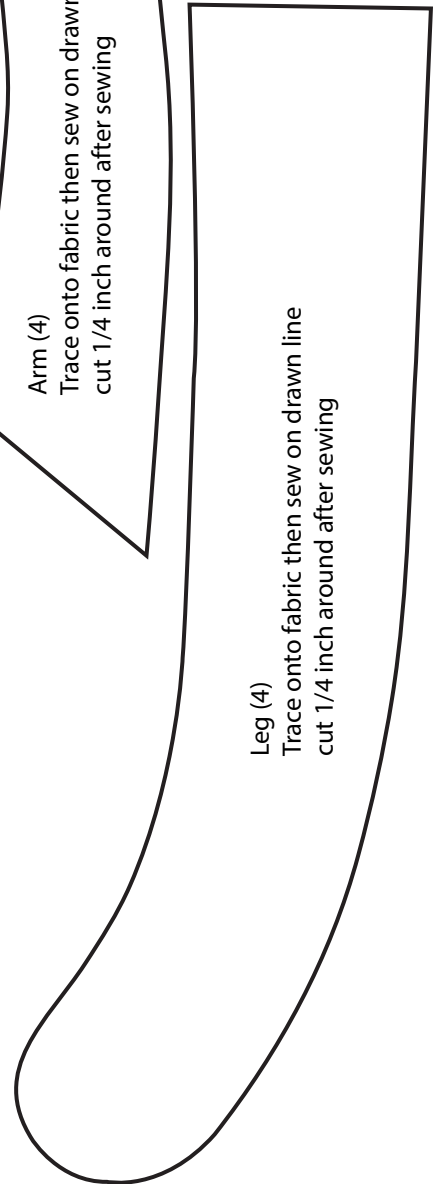
Felt
Flower

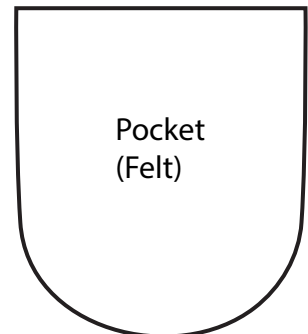
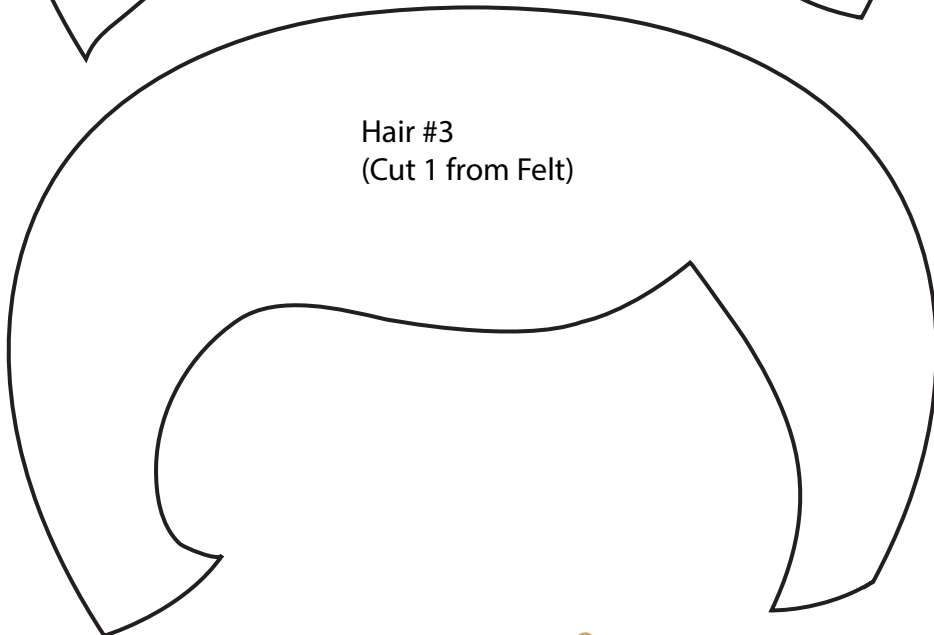
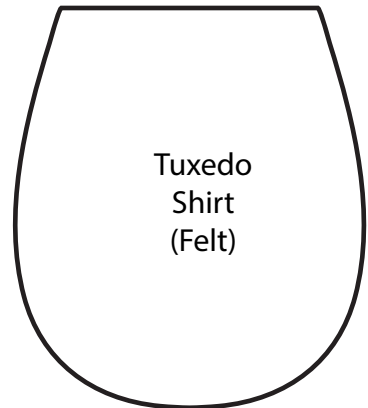
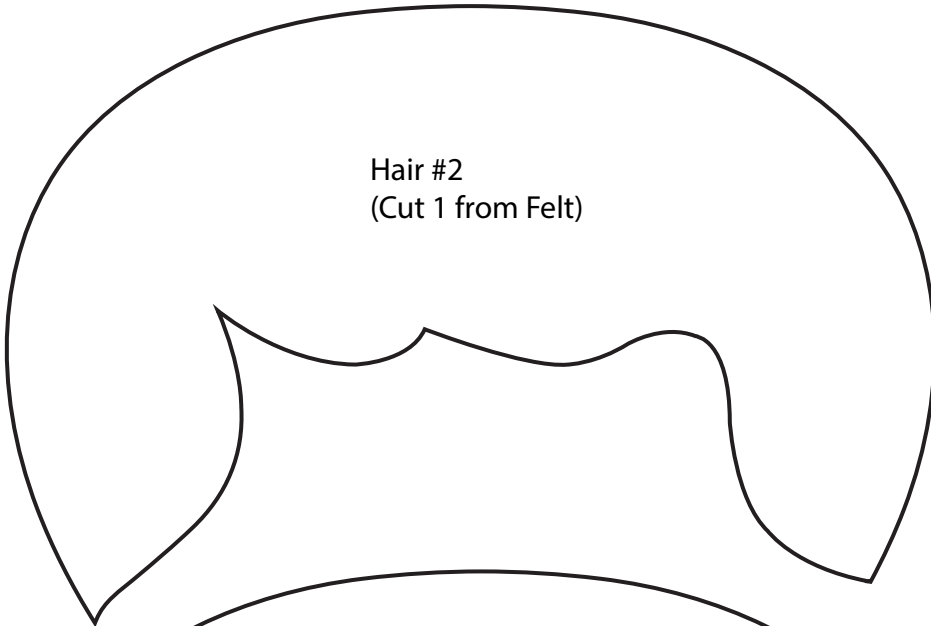
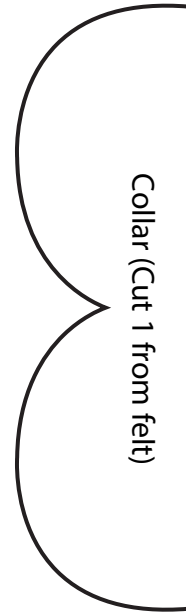
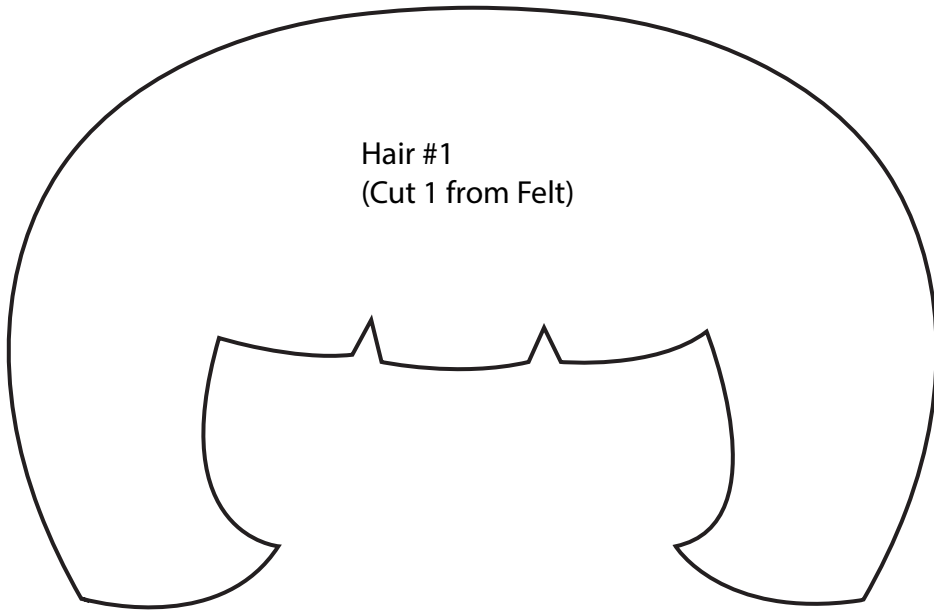
Body
(Cut 2)

Arm (4)
Trace onto fabric then sew on drawn line
cut 1/4 inch around after sewing



Leg (4)
Trace onto fabric then sew on drawn line
cut 1/4 inch around after sewing





tessie fay

*For Personal Use Only